

Sustainable Resource Communities

2010 Mining and Community Research Forum

Wednesday, 16 June 2010

Mackay, Queensland

Lisa Pollard

Manager, Strategic Regional Partnerships



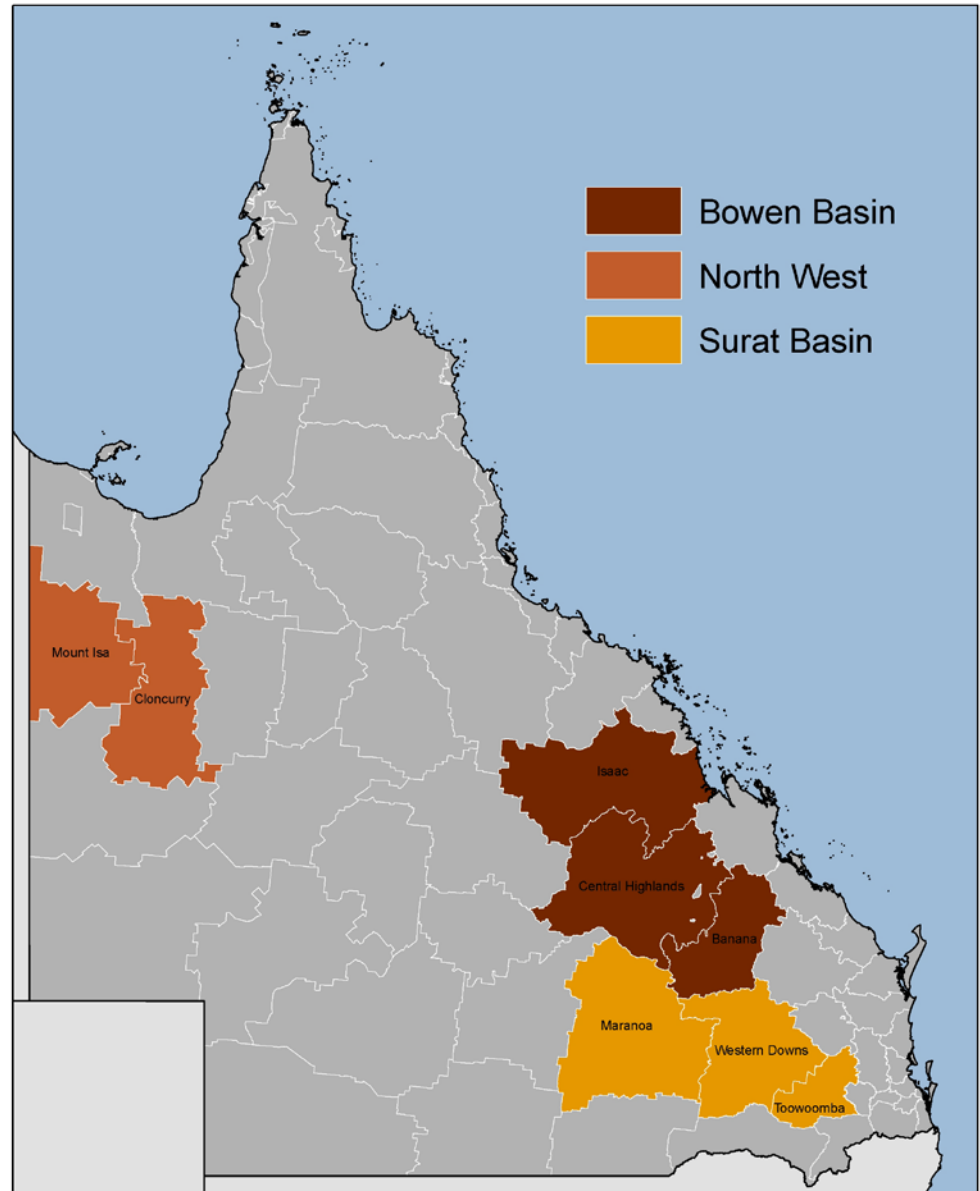


Today...

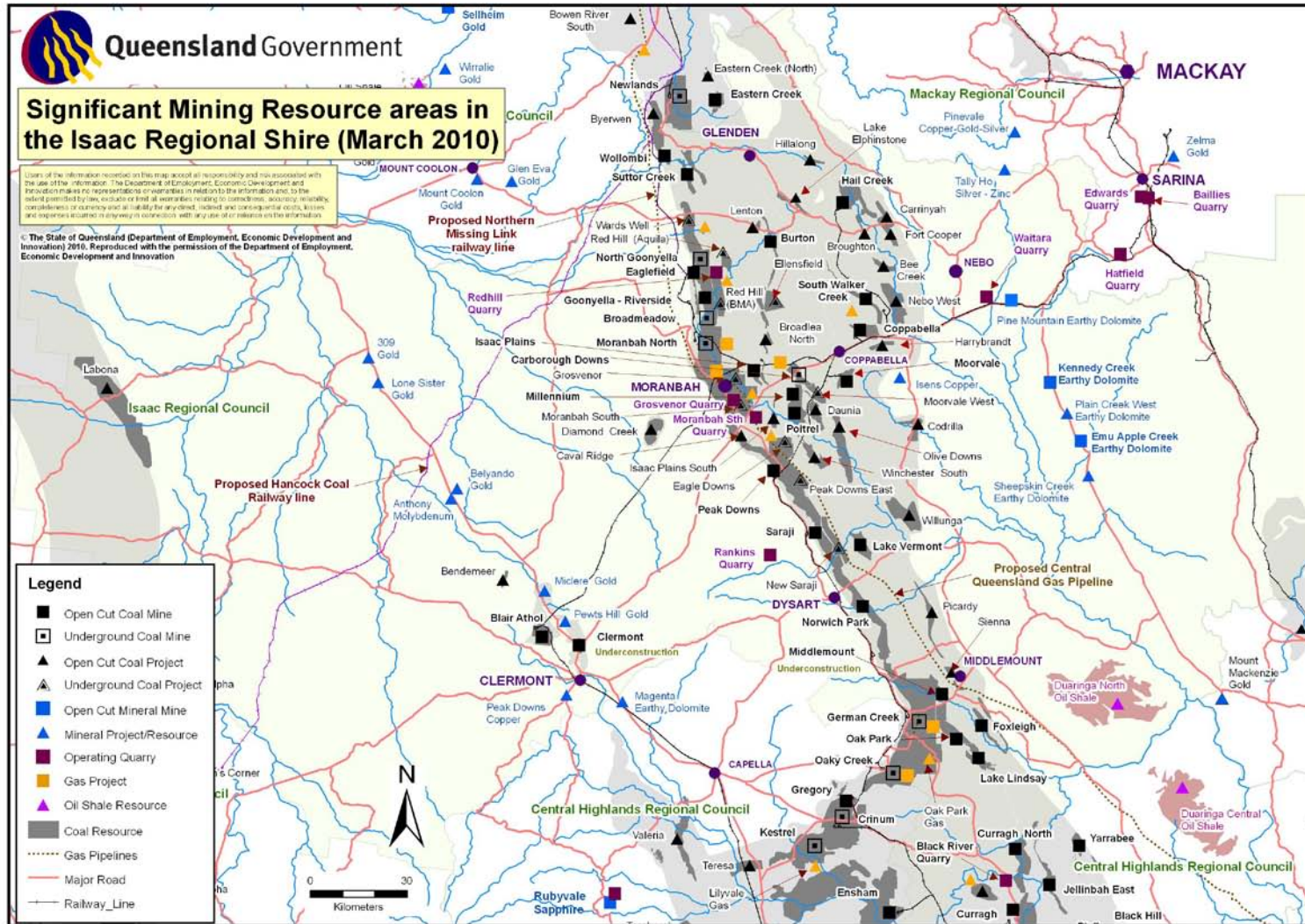
- Sustainable Resource Communities Policy
- Other Queensland Government policy responses for resource communities
 - Surat Basin Future Directions Statement
 - Approaches to cumulative impacts
 - Social Impact Management Plans
 - Cumulative Growth Management Framework
 - Gladstone Social Infrastructure Strategic Plan
- Cumulative Impact Challenges for the Future

Sustainable Resource Communities

- Bowen Basin
- Surat Basin
- North West Minerals Province



Bowen Basin – Isaac Regional Council

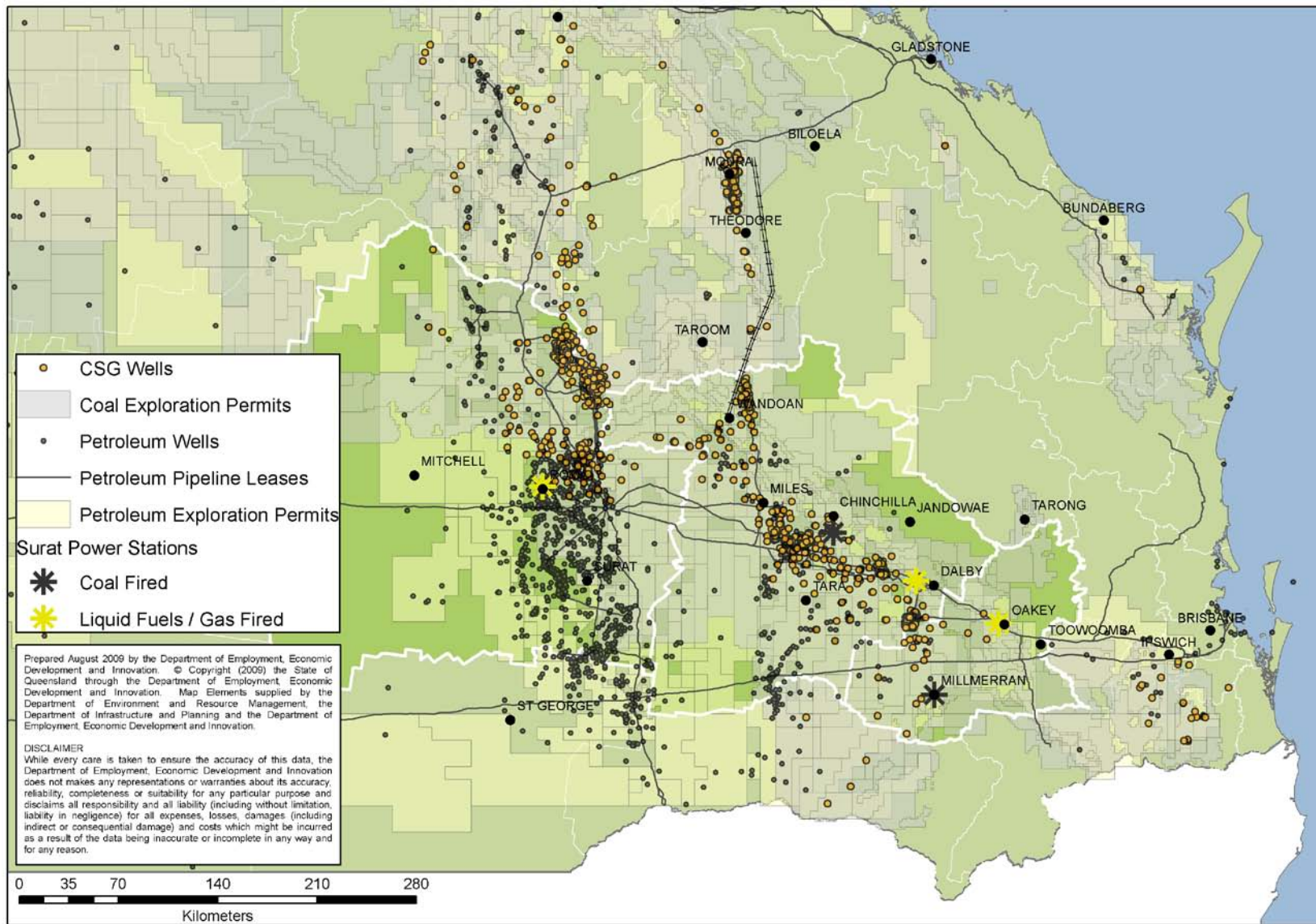




Bowen Basin - Learnings

- Impact on social infrastructure and services
- Significant pressure on economic infrastructure
- Land use conflict
- Need for industrial land
- Impact from temporary workforce
- Cumulative impacts of development e.g. road safety, amenity and lifestyle

Surat Basin





Surat Basin

- Issues of concern:
 - Need to plan ahead for “Bowen Basin” effects
 - Concern about good quality agricultural land
 - Need major infrastructure to assist development
 - Want social infrastructure ahead of growth
 - Want to secure regional and local economic benefits from growth



Sustainable Resource Communities Policy

- Improve coordination and management of impacts of resource development on communities
- Framework built on four key themes
- Relies on communication and shared responsibility
- Policy available at <http://www.regions.qld.gov.au>



SRC Policy - Themes

Theme One

- Strengthening the Queensland Government's Coordination Role
 - Social Impact Assessment unit
 - Social Impact Management Plans
 - Work on priority issues

Theme Two

- Improved Linkages between Social Impact Assessment and Regional Planning
 - Regional Plans: potential to consider cumulative effects
 - Building land use planning capacity
 - Coal Infrastructure Strategic Plan



SRC Policy - Themes

Theme Three

- Fostering Partnerships with Governments, Industry and Community
 - Partnership Group
 - Local Leadership Groups
 - \$100M: projects identified by Partnership Group
 - Liaison Officer appointed in Emerald

Theme Four

- Enhanced Regulatory Environment for Social Impact Assessment
 - Minor legislative amendment
 - Social Management Impact Plans as condition of approval
 - EIS trigger criteria



SRC Partnership Group

- State Government, Local Government, Industry
- Share strategic information and develop solutions to social issues
- First time this kind of approach undertaken
- Membership includes:
 - Queensland Government (Dept Infrastructure and Planning)
 - Mount Isa Regional Council
 - Cloncurry Shire Council
 - Isaac Regional Council
 - Central Highlands Regional Council
 - Banana Shire Council
 - Western Downs Regional Council
 - Maranoa Regional Council
 - Local Government Association of Queensland
 - Queensland Resources Council



SRC Policy - \$100 million

- Criteria for funding:
 - hard infrastructure in relevant communities
 - projects that fall within the State Government's area of responsibility (ie. roads, hospitals, education)
 - projects that will assist communities prepare for rapid growth, or manage the legacy of previous growth
- Potential projects identified/nominated by SRC Partnership Group members
- Projects assessed by Queensland Government agencies within context of existing priorities and infrastructure projects
- Projects that involved partnerships between government, industry and community considered favourably



SRC Policy - \$100 million

- Projects supported include new and upgraded infrastructure for:
 - child care centres
 - affordable accommodation
 - trade training centres
 - community centres / pools
 - emergency services facilities
 - road safety improvements
 - health related accommodation
 - aged care facilities



SRC Policy Implementation

- 18 months into 3 year policy
- Policy to be reviewed after 3 years and make recommendations about extending to other industries
- Major learnings from implementation:
 - Partnerships can work
 - Capacity to influence infrastructure funding through shared priorities
 - Local action connected to decision makers



Other Queensland Government Policy Responses for Resource Communities

- Surat Basin Future Directions Statement
- Approaches to cumulative impacts



Surat Basin Future Directions Statement

- Commits the Government to work with local government, industry and community
- Achieve objectives through planning initiatives:
 - Preferred Settlement Pattern and Regional Planning Framework
 - Regional Transport Investigation
 - Resource Town Housing Affordability Strategy
 - Social Impact Management Plans
 - Regional Economic Strategy
 - Framework to manage Strategic Cropping Land
 - Workforce Development Plan



Approaches to Cumulative Impacts

- Social Impact Management Plans
- Cumulative Growth Management Framework
- Gladstone Social Infrastructure Strategic Plan



Cumulative Impact Challenges for the Future

- Uncertainty and unevenness of development
- Accurate and timely data
- Determining a hierarchy of regional centres
- Coordination and integration
- Sustainable resource management (land, water)
- Building capacity and capability of local business
- Diversifying the economy
- Monitoring and managing cumulative impacts
- Maintaining liveability



Meeting the Challenges

- Effective partnerships
- Comprehensive and integrated approach
- Building resilience in regional communities
- Adaptability and responsiveness



So...

- Significant potential for continued strong regional development in parts of Queensland
- Need to ensure partnerships with industry, community and all levels of government
- Focus on economic development, including liveability, as an attractor for skilled workforces and business investment